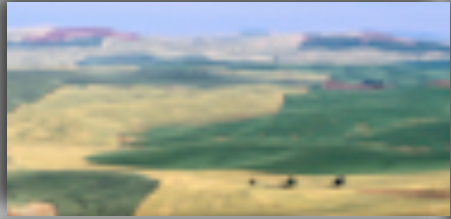


# NEVADA STATE EMISSIONS

## EMISSIONS INVENTORY, PERMITTING & MODELING SYSTEM



### Client:

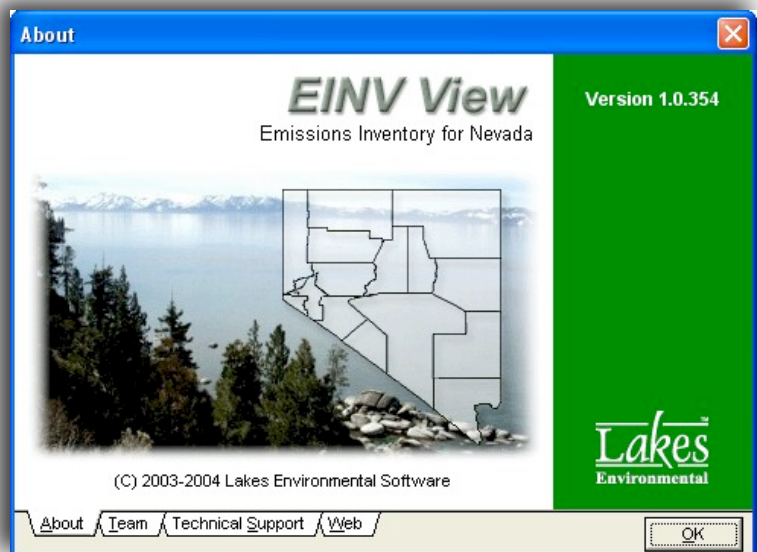
State of Nevada, Clark  
County and Washoe  
County



The State of Nevada faced pressures to meet an increasing number of regulatory requirements while their state continued to grow and develop. Several years ago, they saw value in centralizing and automating and decided to implement i-step. While the system helped with the centralizing and automation, it soon failed to keep up with the demands of the team as they enriched their strategies and goals. The capabilities they found in Emissions View™ and Permit View™, and the confidence they had in Lakes

**“...and the confidence they had in Lakes Environmental’s track record for product evolution”**

*Environmental’s* track record for product evolution were key factors in their decision to migrate from i-step. They implemented a web enabled version of the paired system and are hosting the application with their own resources.



**State Wide Web Distribution Hosted by Nevada**