

## BENEFITS

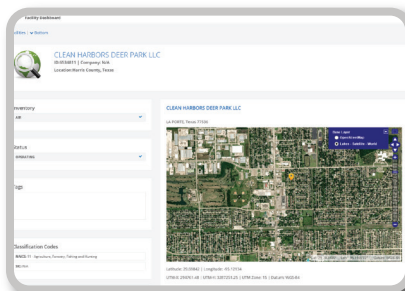
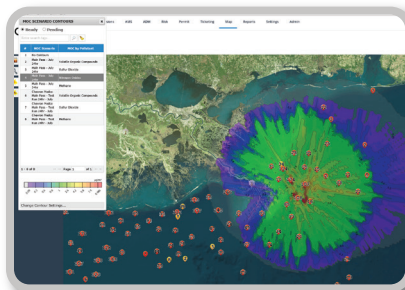
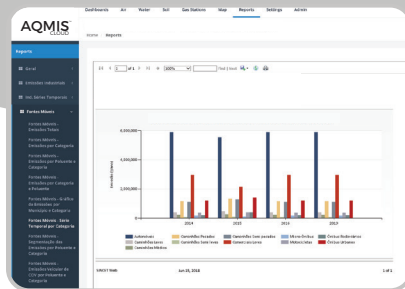
- Increase Productivity
- Eliminate the Need for Paper Forms
- Integrate Legacy System and Spread Sheets into a Single Application
- Standardize Agency Workflows and Procedures
- Cost Reduction and Red Tape
- One Application Consolidating all your Data

## FEATURES

- Web-Based Solution, Cloud or Locally Hosted
- User Customized and Fillable PDF Forms
- Dashboards and KPIs
- Fully Integrated GIS
- EI Library Including IPCC, AP-42 (including Tanks) and EIIP Estimation Methods
- Online and Mobile Data Capture
- Calendar and Ticket Tracking
- Air Quality Index (AQI)

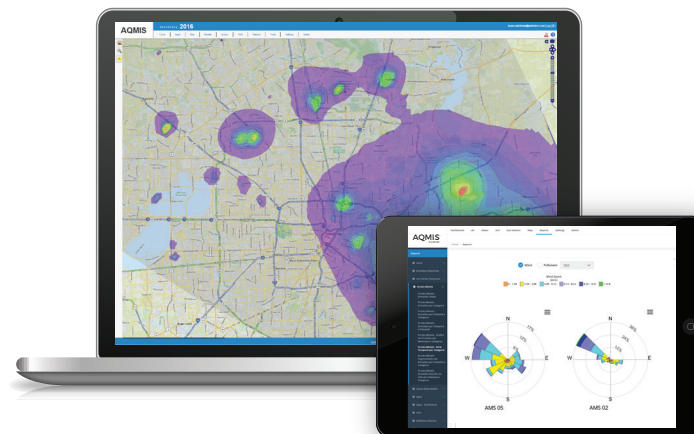
## CAPABILITIES

- Emissions Inventory
- Regulatory Air Dispersion Modeling
- Forecast Air Quality
- Emergency Release Modeling
- Ambient Air Monitoring
- Permitting and Compliance
- Human Health Risk Assessment
- Electronic Submission
- AB 617



Lakes<sup>TM</sup>  
Environmental

# AQMIS<sup>TM</sup> CLOUD



ENVIRONMENTAL  
PERMITTING &  
COMPLIANCE

AIR, WATER,  
SOLID WASTE

REAL-TIME &  
FORECAST  
MODELING

Lakes<sup>TM</sup>  
Environmental

[sales@webLakes.com](mailto:sales@webLakes.com)

1.519.746.5995

[www.webLakes.com](http://www.webLakes.com)

Environmental Compliance Solution

[www.webLakes.com](http://www.webLakes.com)

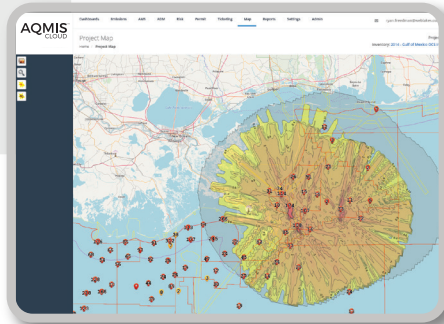
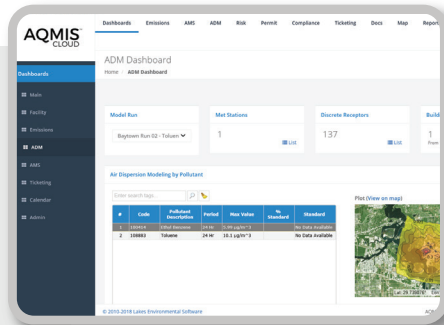
# Environmental Compliance Solution

AQMIS is a cloud solution for air, water and solid waste. AQMIS enables regulatory agencies, governments and facilities around the world to manage emissions from thousands of sources, run models, issue permits, forecast air quality impacts and more, all through the convenience of a fully integrated web application.

## Integrated Solution

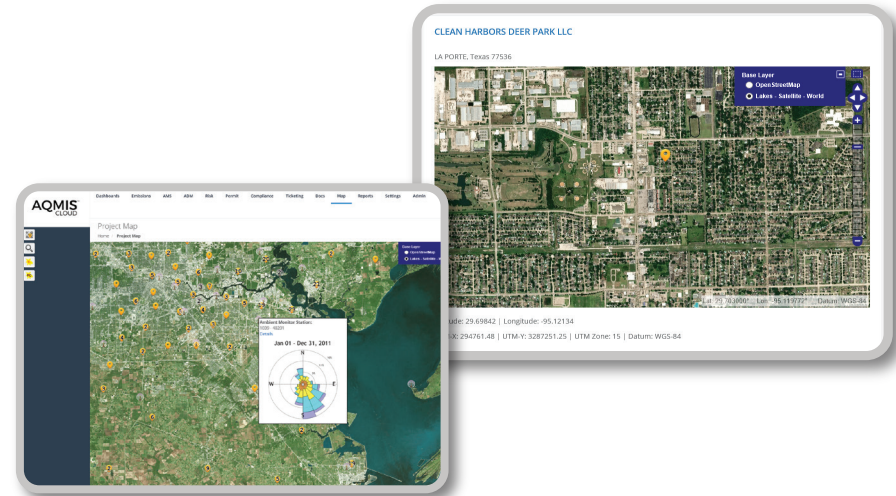
- Emissions Inventory
- Air Dispersion Modeling
- Air Quality Forecasting
- Ambient Air Monitoring
- Human Health Risk Assessment
- Wastewater and Solid Waste
- Permitting and Compliance
- GIS/Mapping
- Dashboards and Reports
- GHG

AIR | WATER | SOLID WASTE



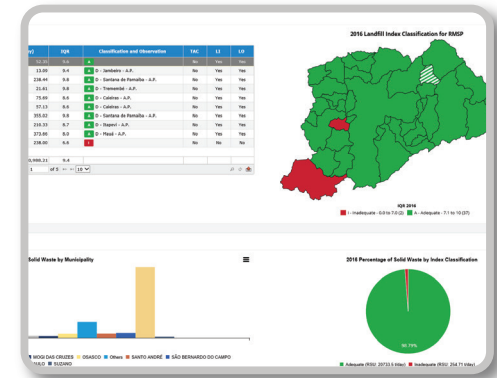
## Real-Time and Forecast Modeling

Schedule operations around optimum environmental conditions, minimize downtime, avoid exceedances and resulting regulatory penalties and defending against expensive toxic tort litigation.



## Identify Potential Risk Endpoints

Automatically detect potential violations of permit conditions, adverse health impacts or quantify the validity of odor/nuisance complaints.



sales@webLakes.com

www.webLakes.com

